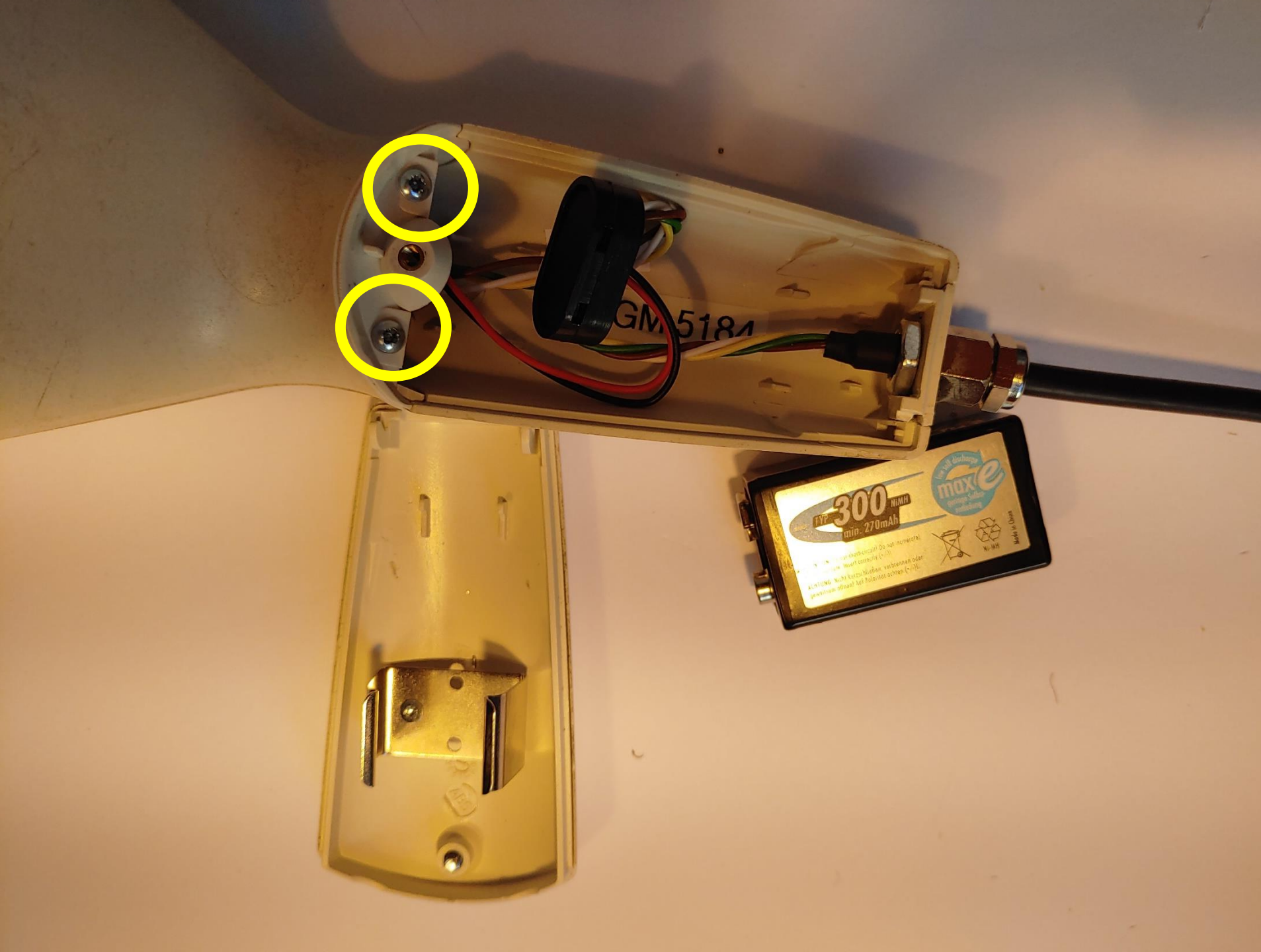




- ● Open the TGM

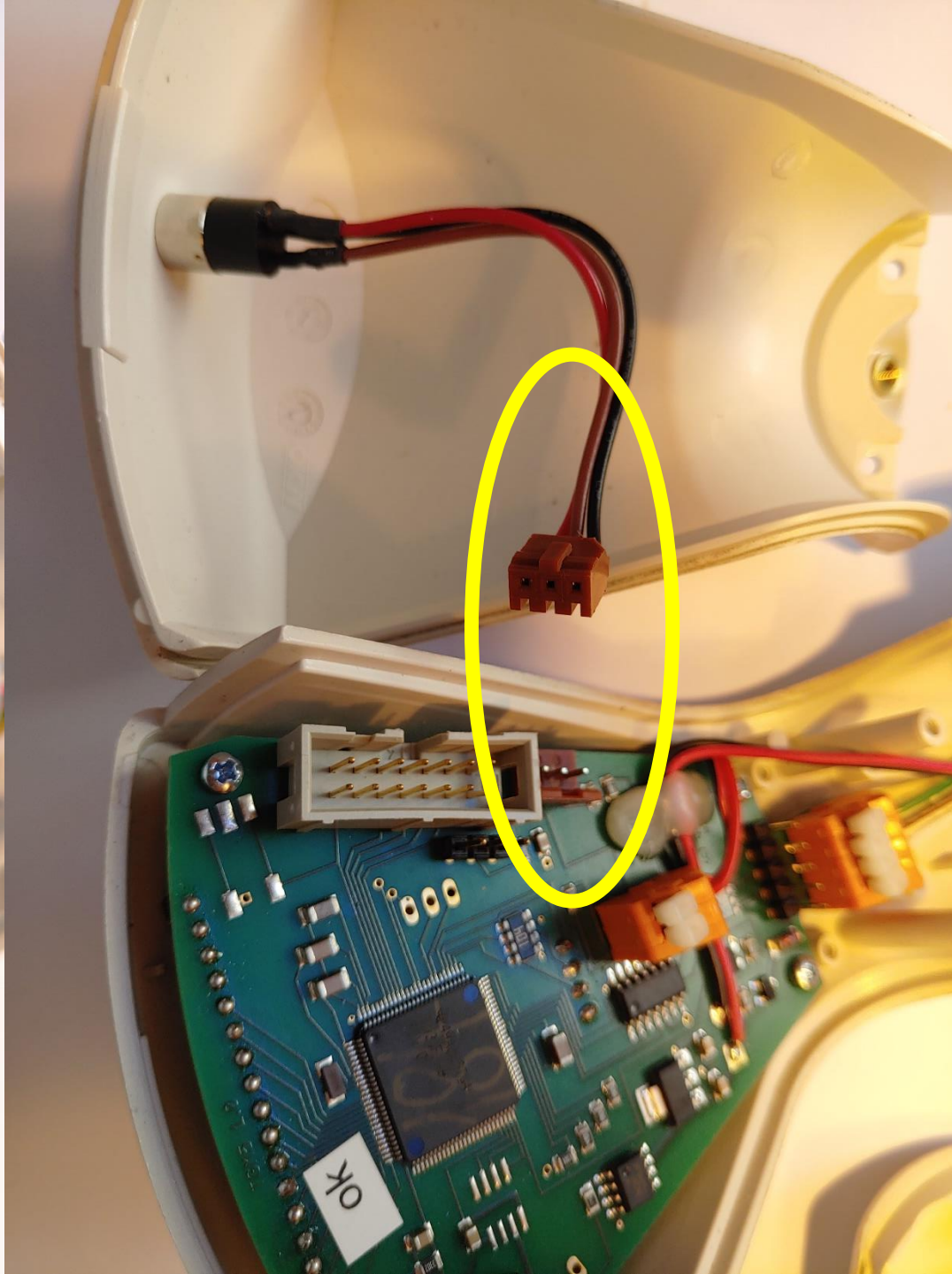


- Disconnect the battery
- • Unscrew the two screws holding the upper case



- Open the upper case by flipping it upwards
- Be careful because of the still connected cables



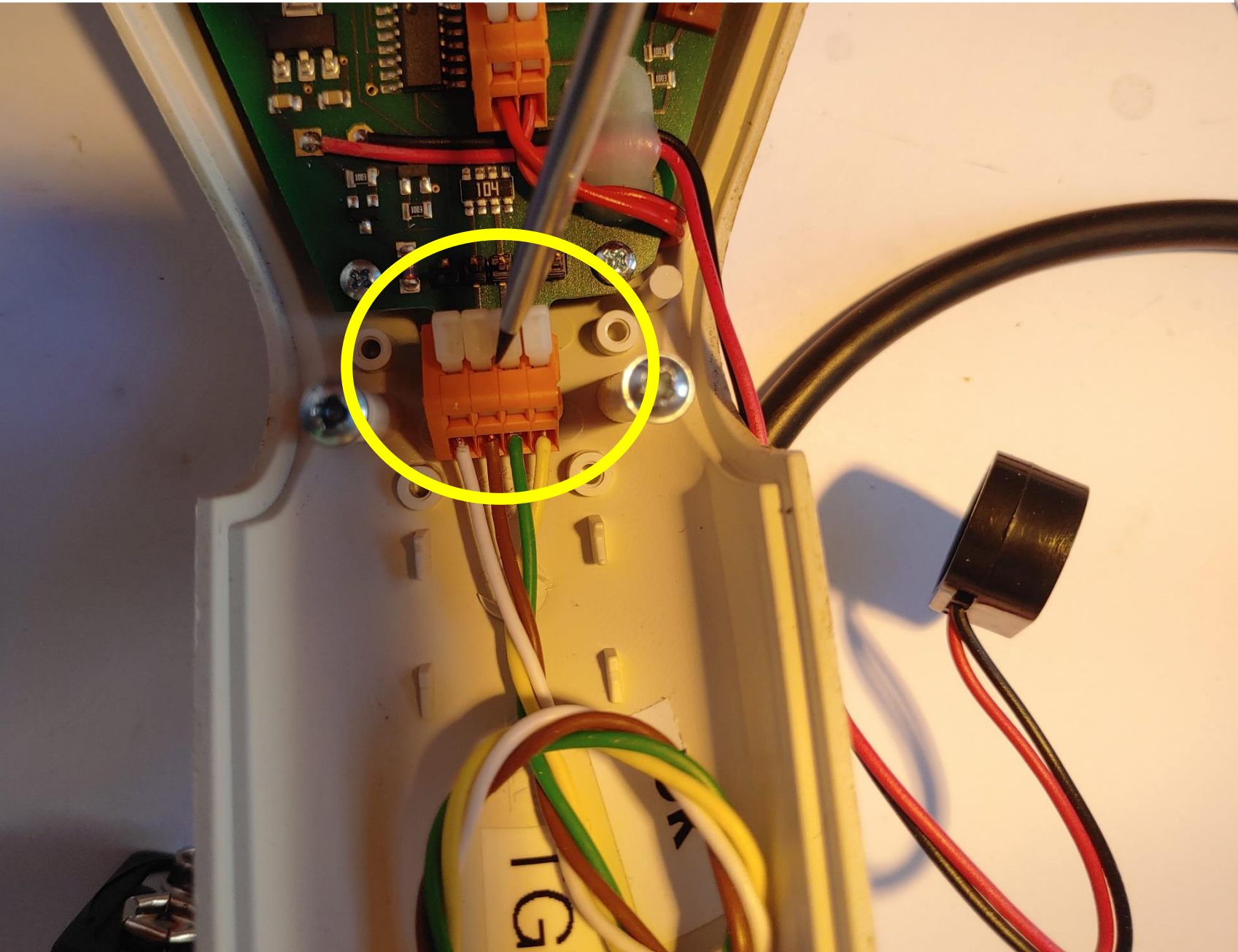


- Disconnect the cable

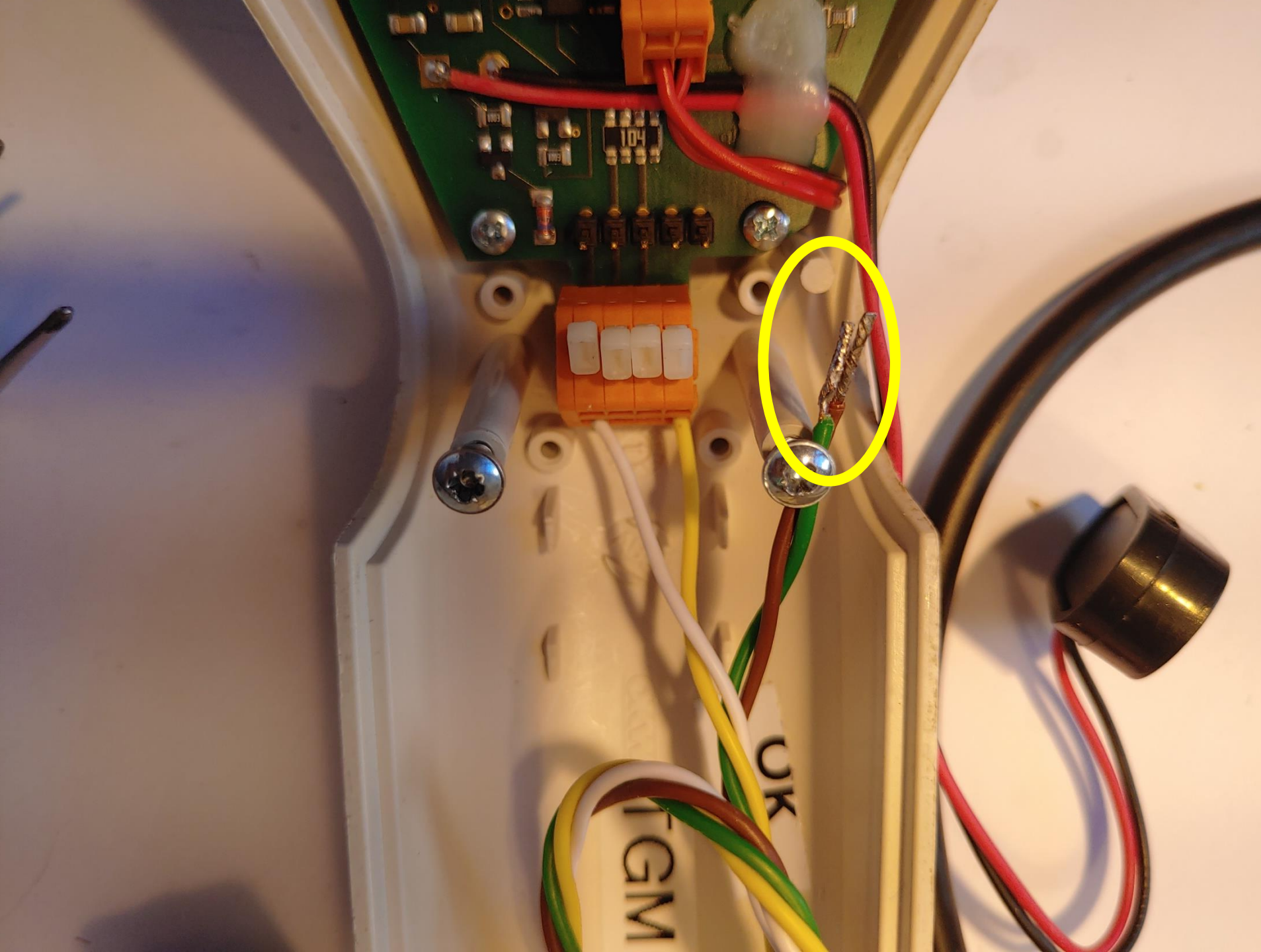


- Open device should look like this





By pressing the white part of the cable clamp and in the same moment pulling on the cable you can remove all cables from the clamp



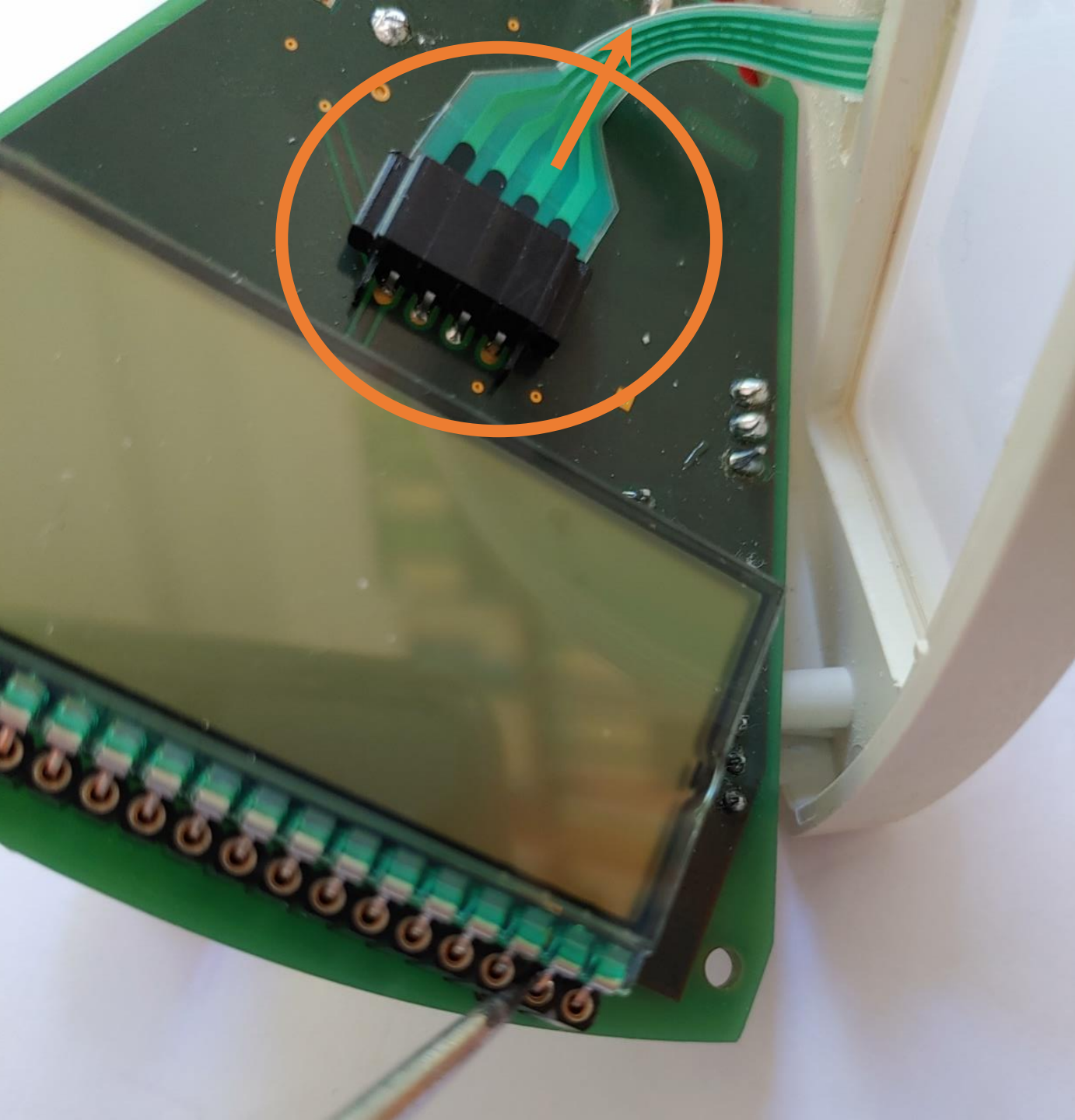
- Here the green and brown cables are disconnected





- Open the device and remove the battery
- ● Remove the green, brown, white and yellow cables to the sensor head by pressing the clamps in the orange block ●
- ● Unscrew the 4 screws to loosen the PCB ●
- ● Disconnect the red(+) and red/black(-) cable to the LED from the PCB by pressing the two clamps
- Remember red/black(–) is by this perspective the lower or right clamp ●

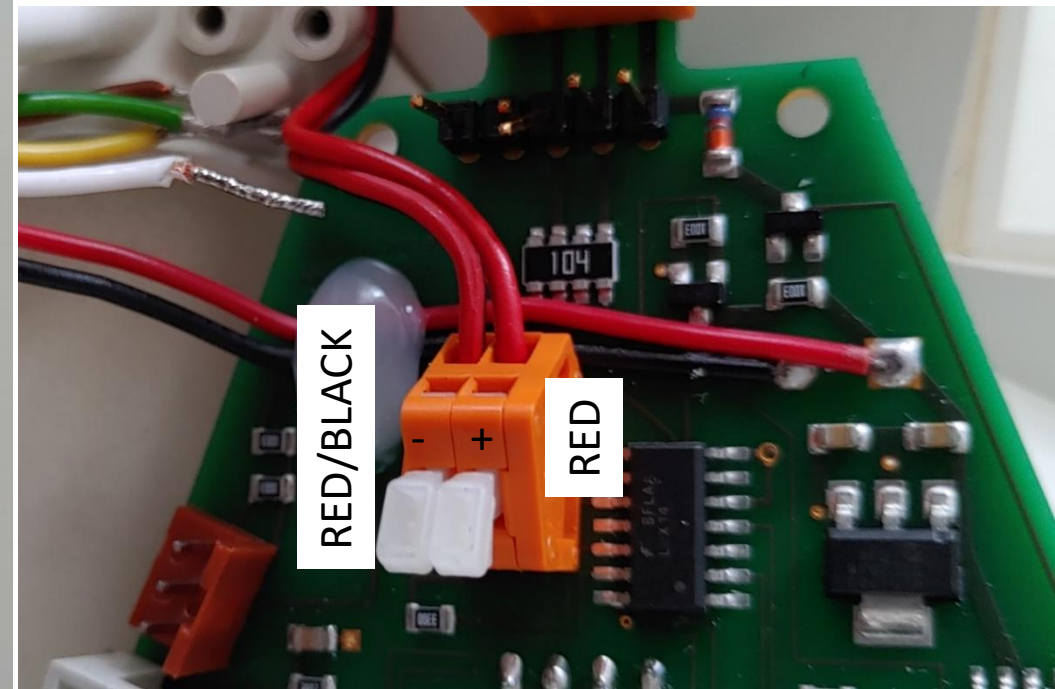




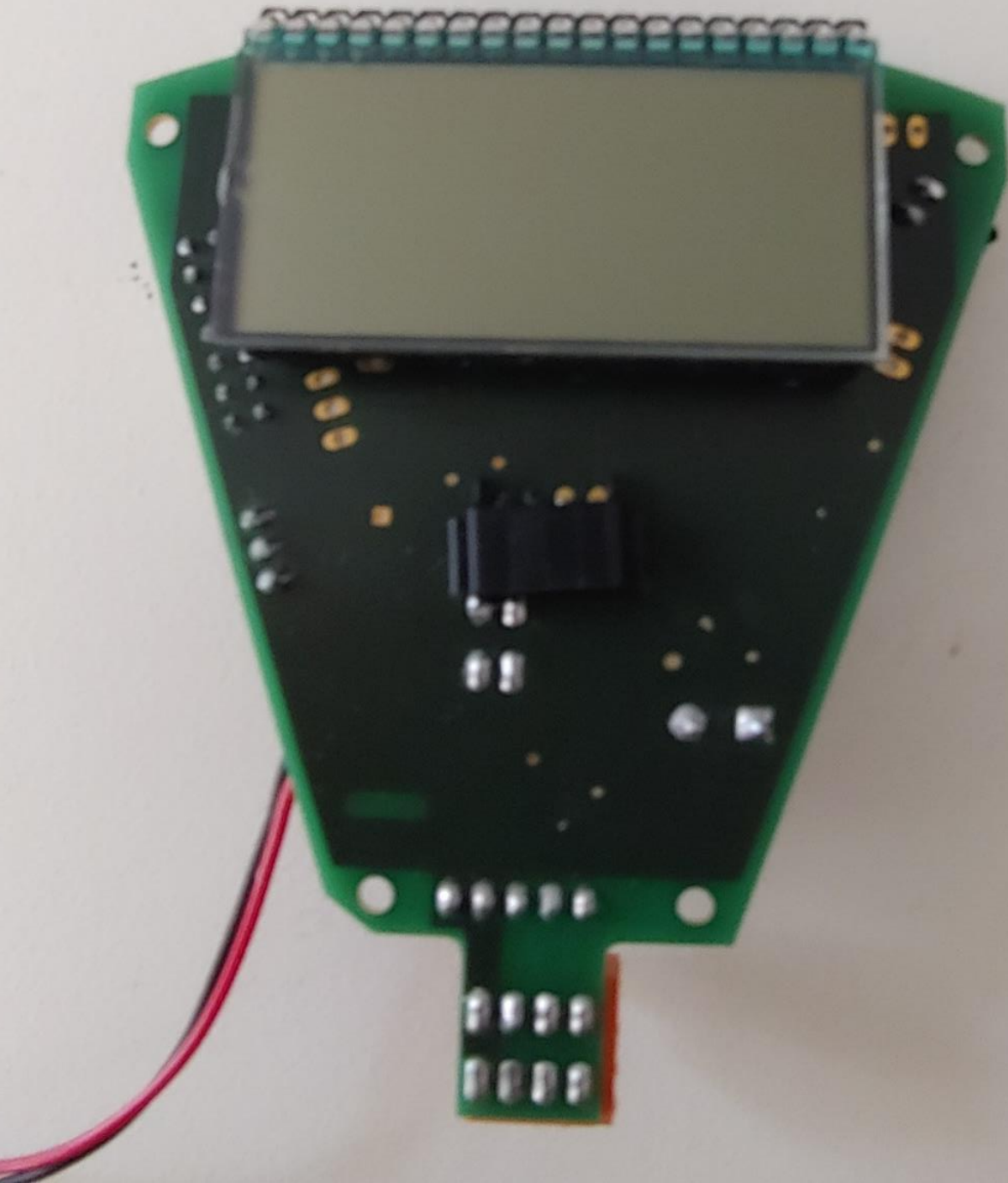
- Flip the PCB to the display side
- Carefully remove the foil cable by pulling it out of the connector



- If not already done, please disconnect the two cable to the LED by pressing the clamps – red/black(-) is left in this perspective •







- The disconnected PCB should look like this
- Please do all steps backwards with the new PCB