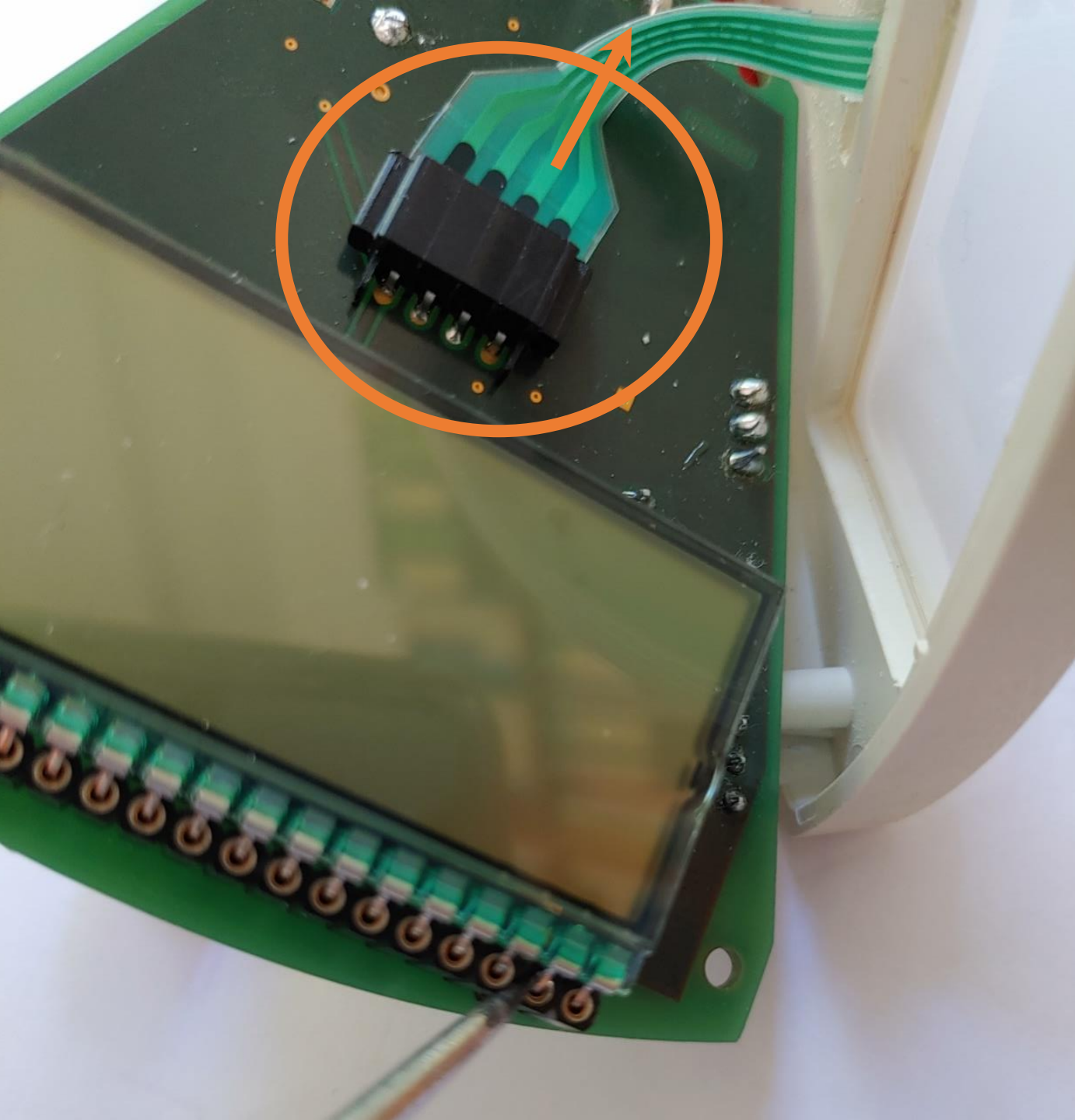




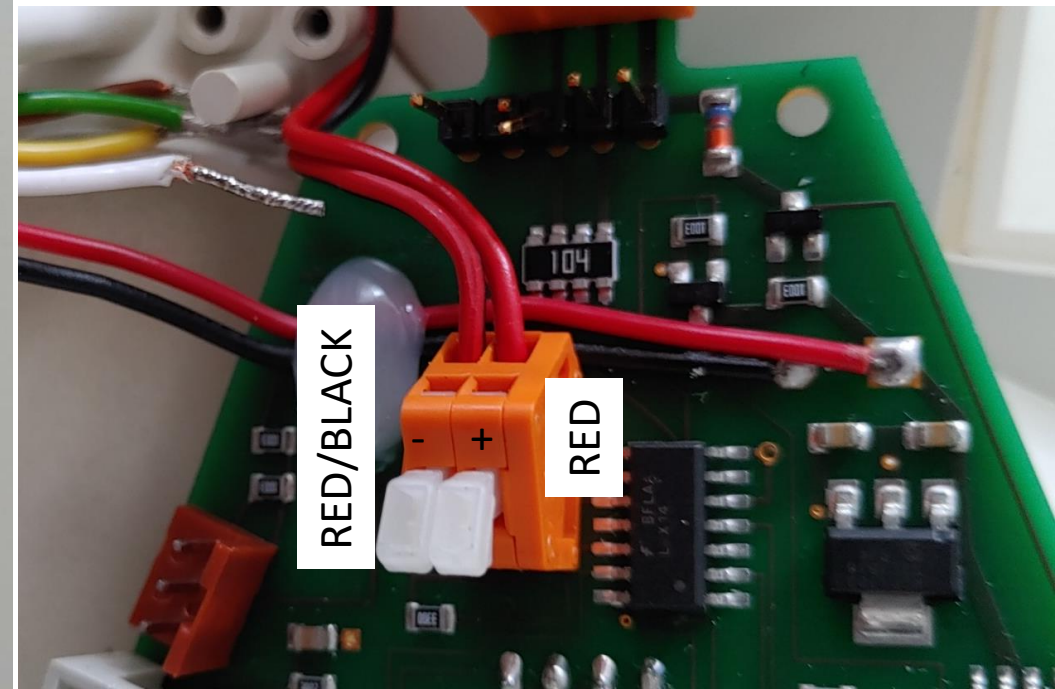
- Open the device and remove the battery
- ● Remove the green, brown, white and yellow cables to the sensor head by pressing the clamps in the orange block ●
- ● Unscrew the 4 screws to loosen the PCB ●
- ● Disconnect the red(+) and red/black(-) cable to the LED from the PCB by pressing the two clamps
- Remember red/black(–) is by this perspective the lower or right clamp ●

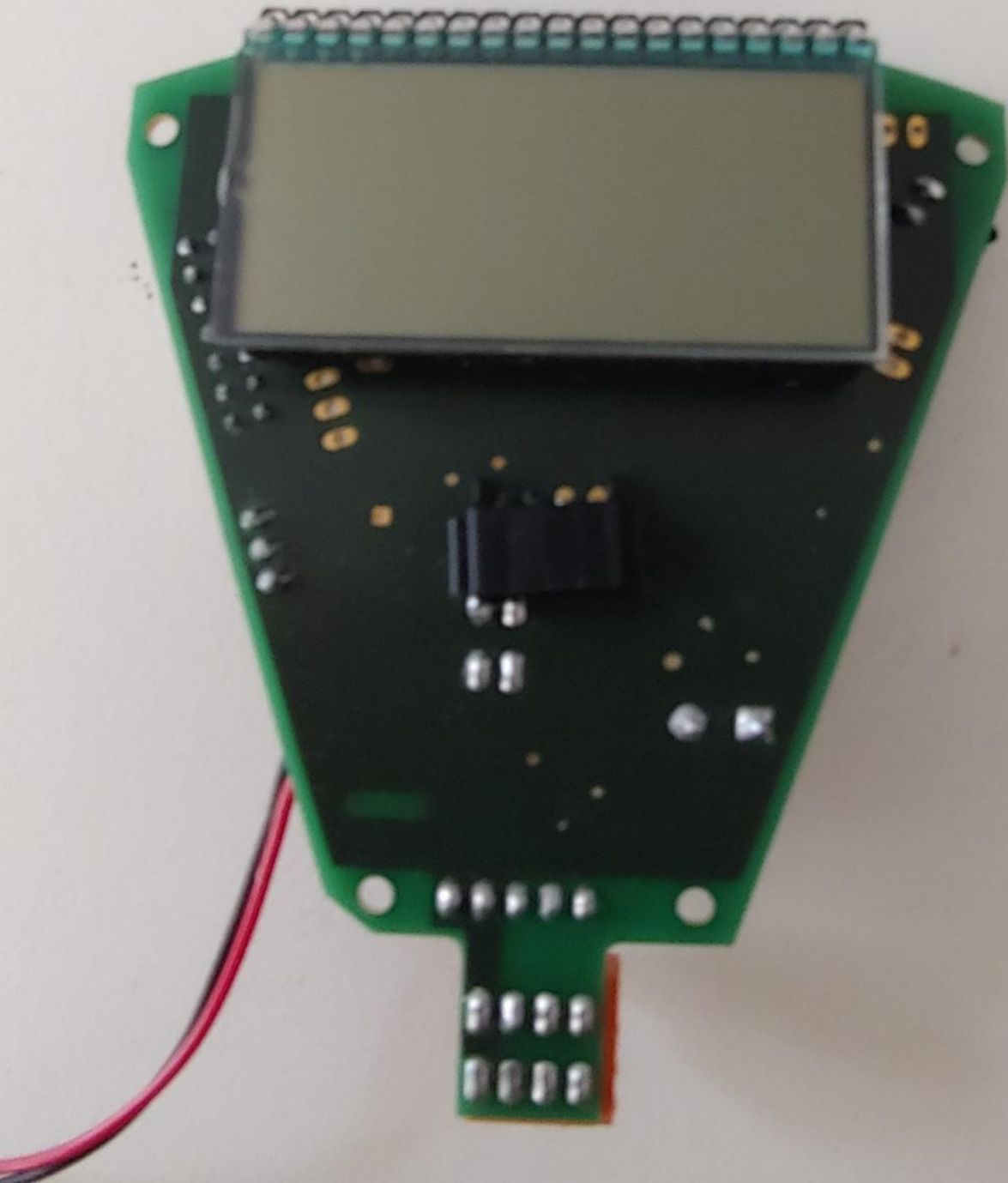


- Flip the PCB to the display side
- Carefully remove the foil cable by pulling it out of the connector

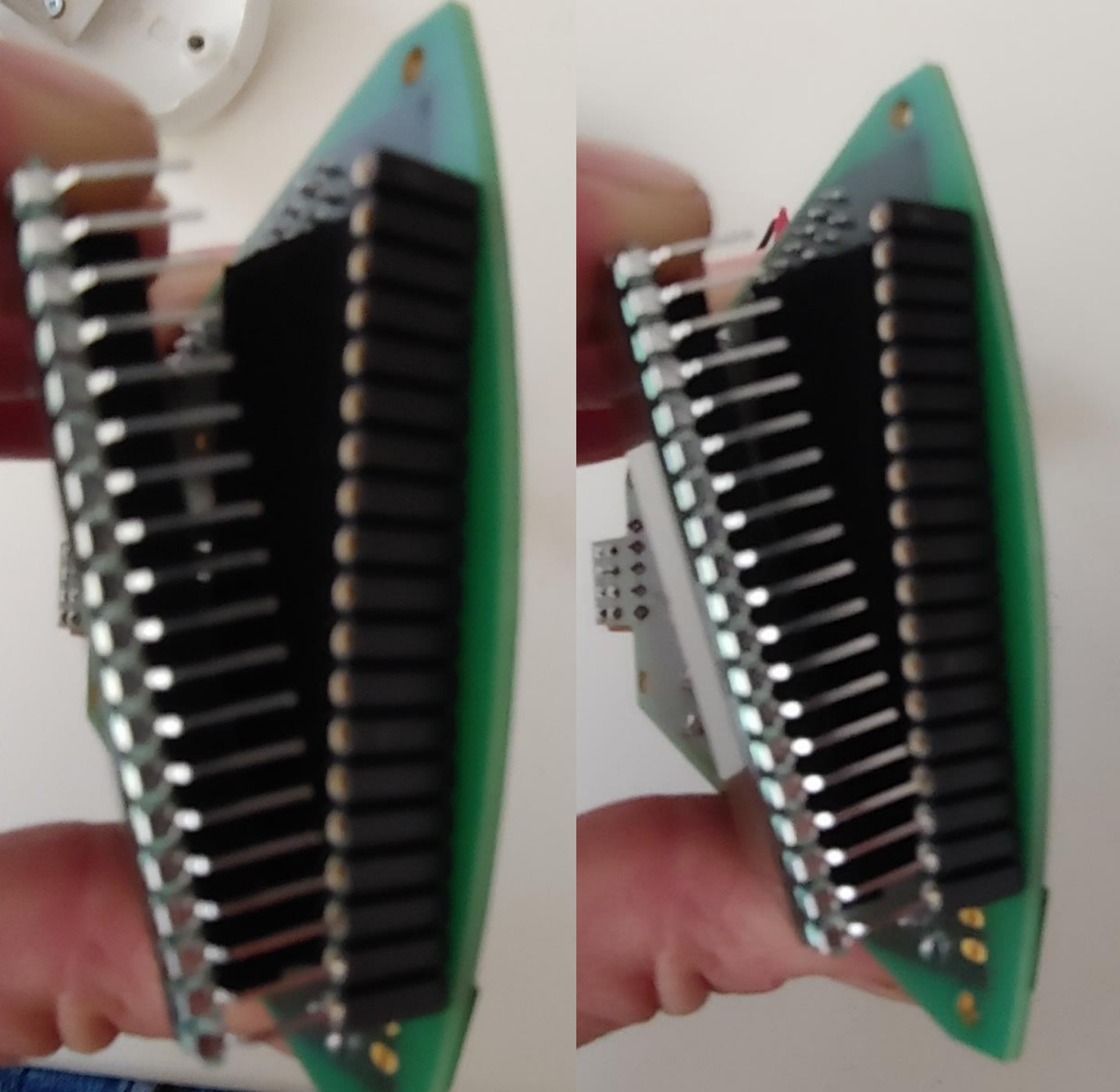


- If not already done, please disconnect the two cable to the LED by pressing the clamps – red/black(-) is left in this perspective •

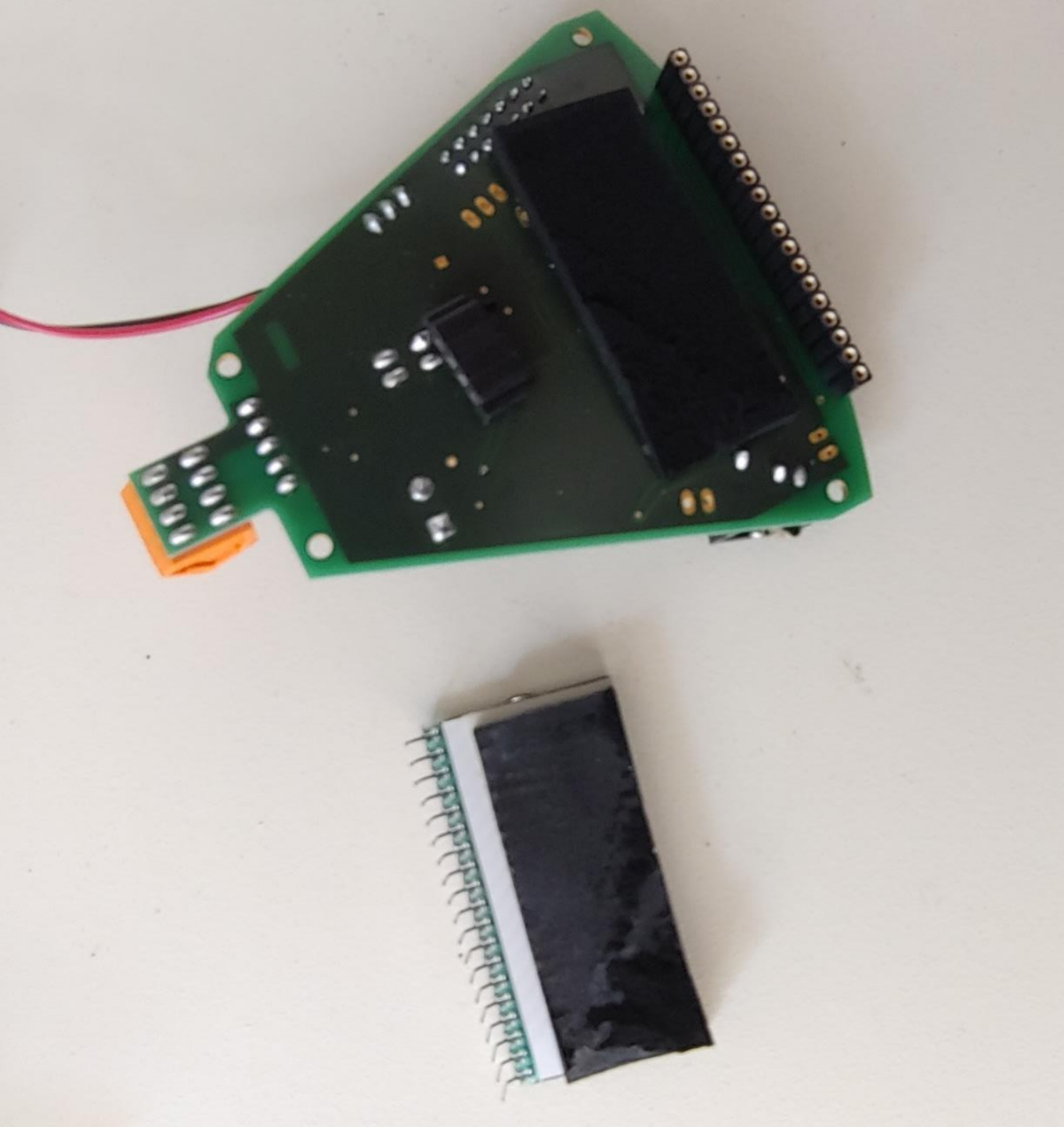




- It should look like this



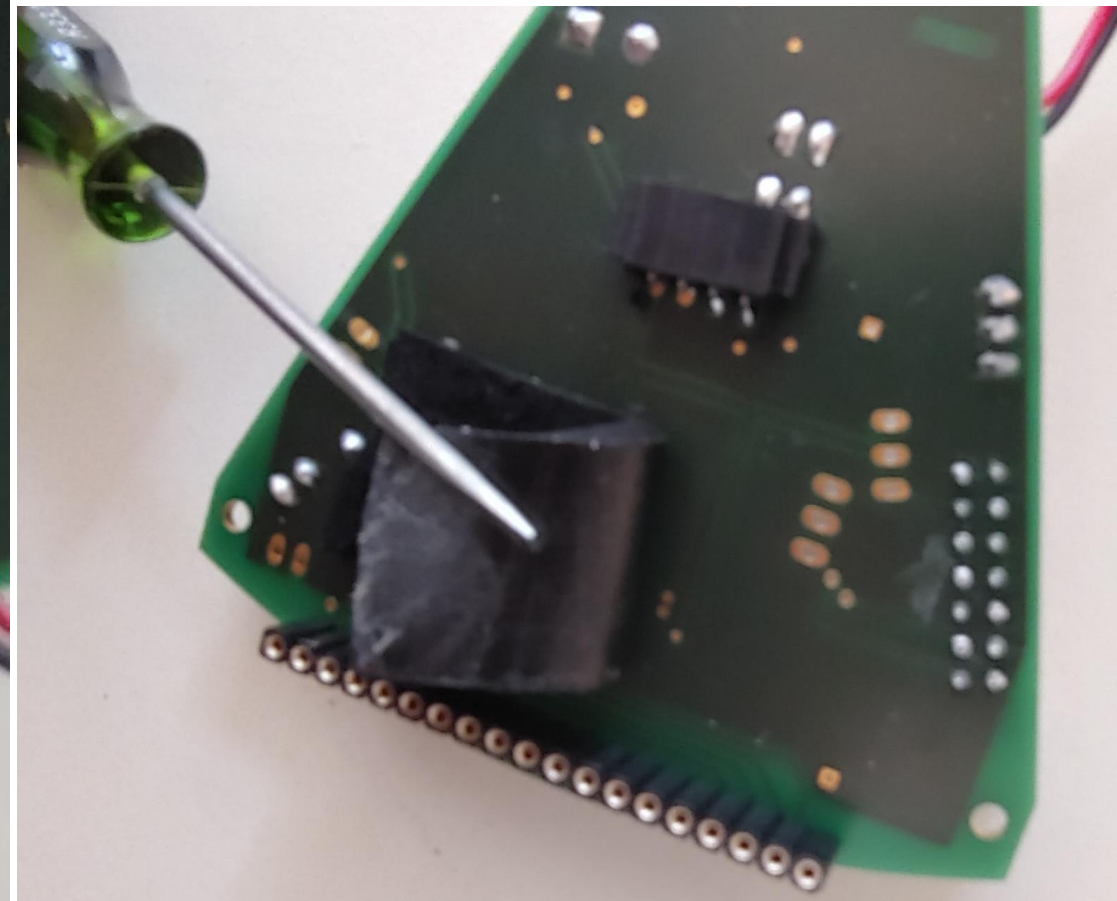
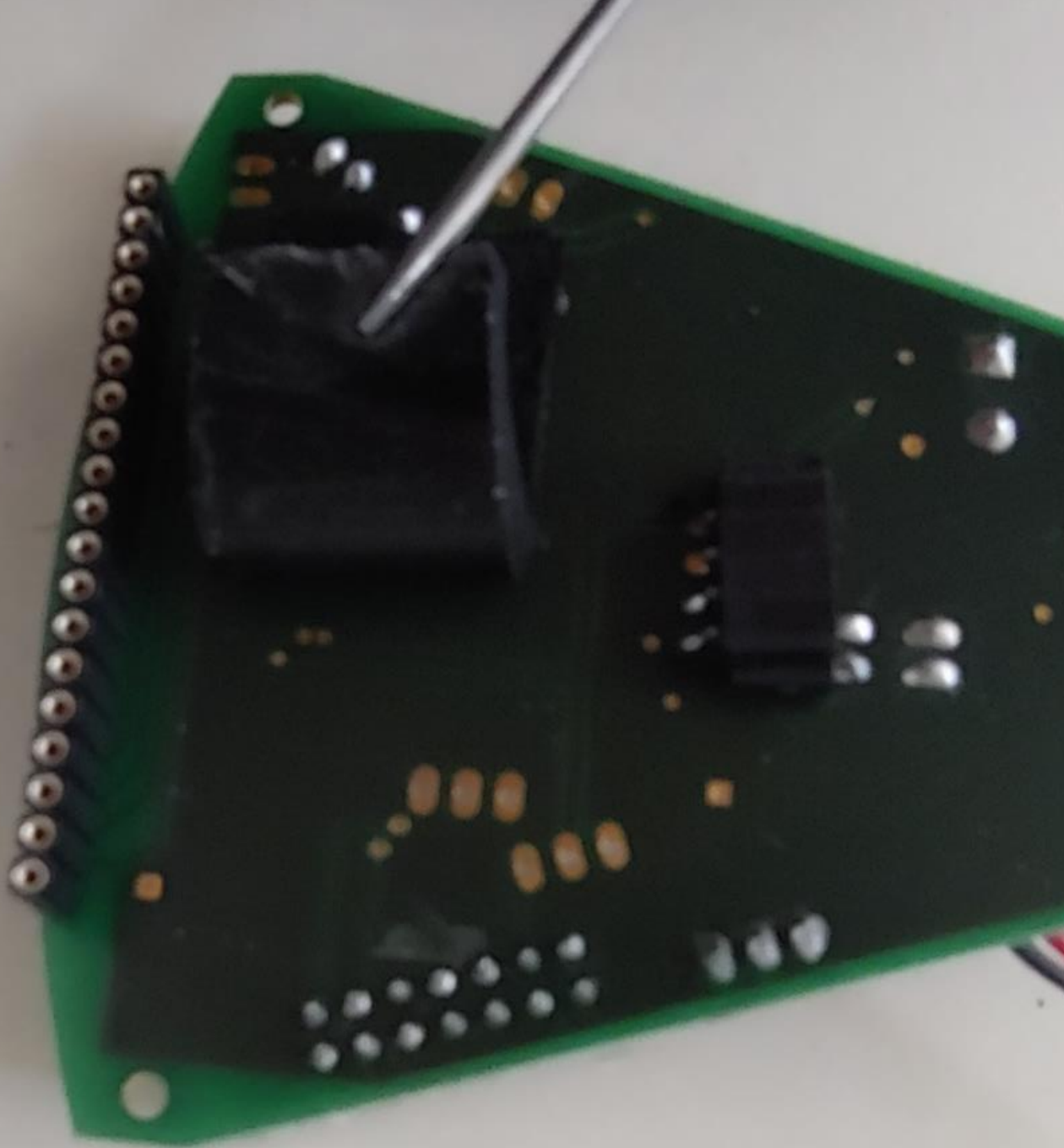
- Remove the display from the female pinhead
- Carefully but with a bit of force to overcome the glue
- No problem if the foam gets destroyed while removing the display

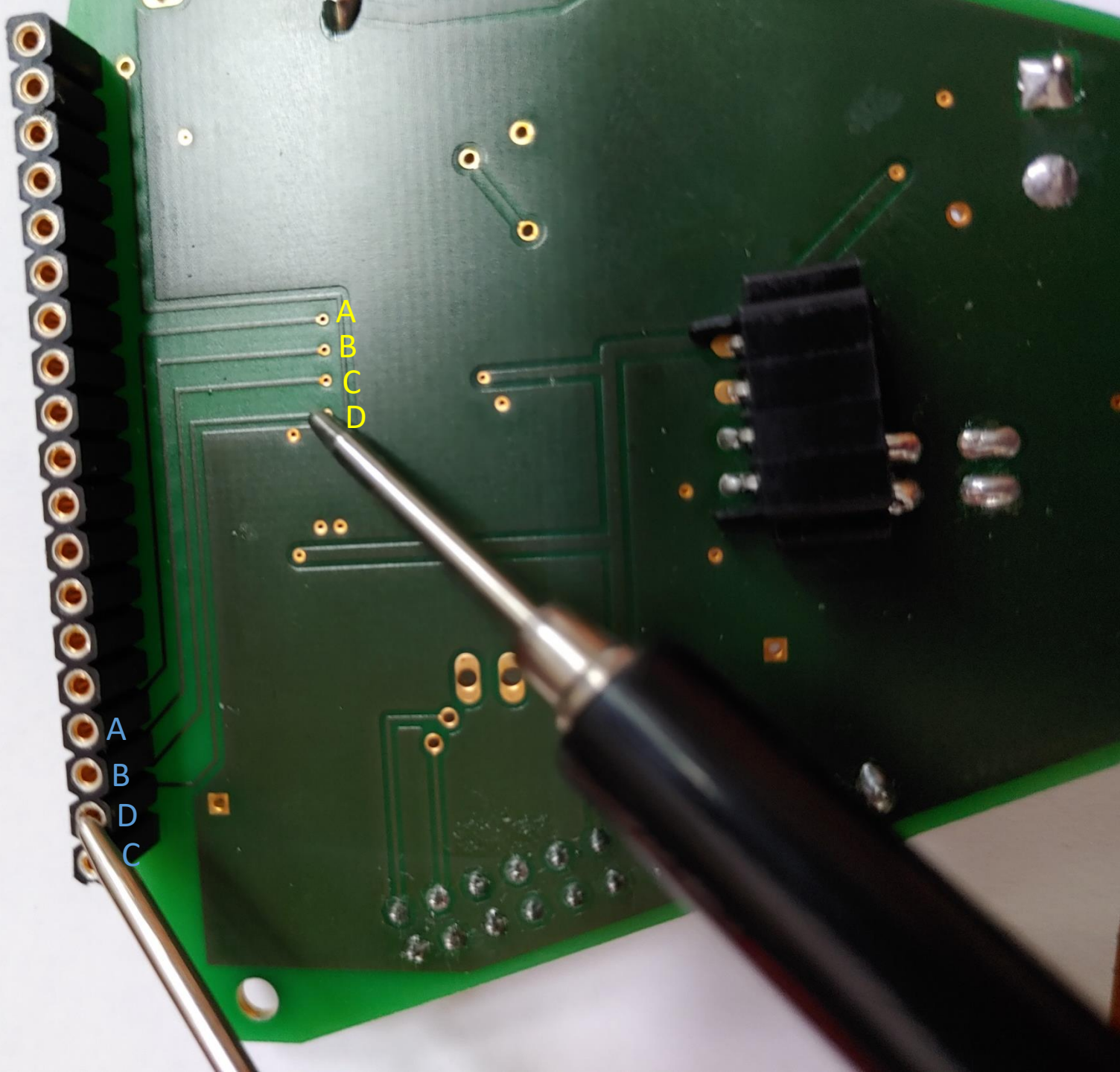


- It should look something like this but it might differ where the foam tears up



- Remove all foam from the PCB
- Please **don't** scratch the PCB with a sharp obstacle





- Please check the connection between the board passages (yellow) and the female pinhead (blue) to check the soldering of the female Pinhead
- Please reassemble vice versa with new display and new foam under the Display
- There is no need to glue the foam to the PCB