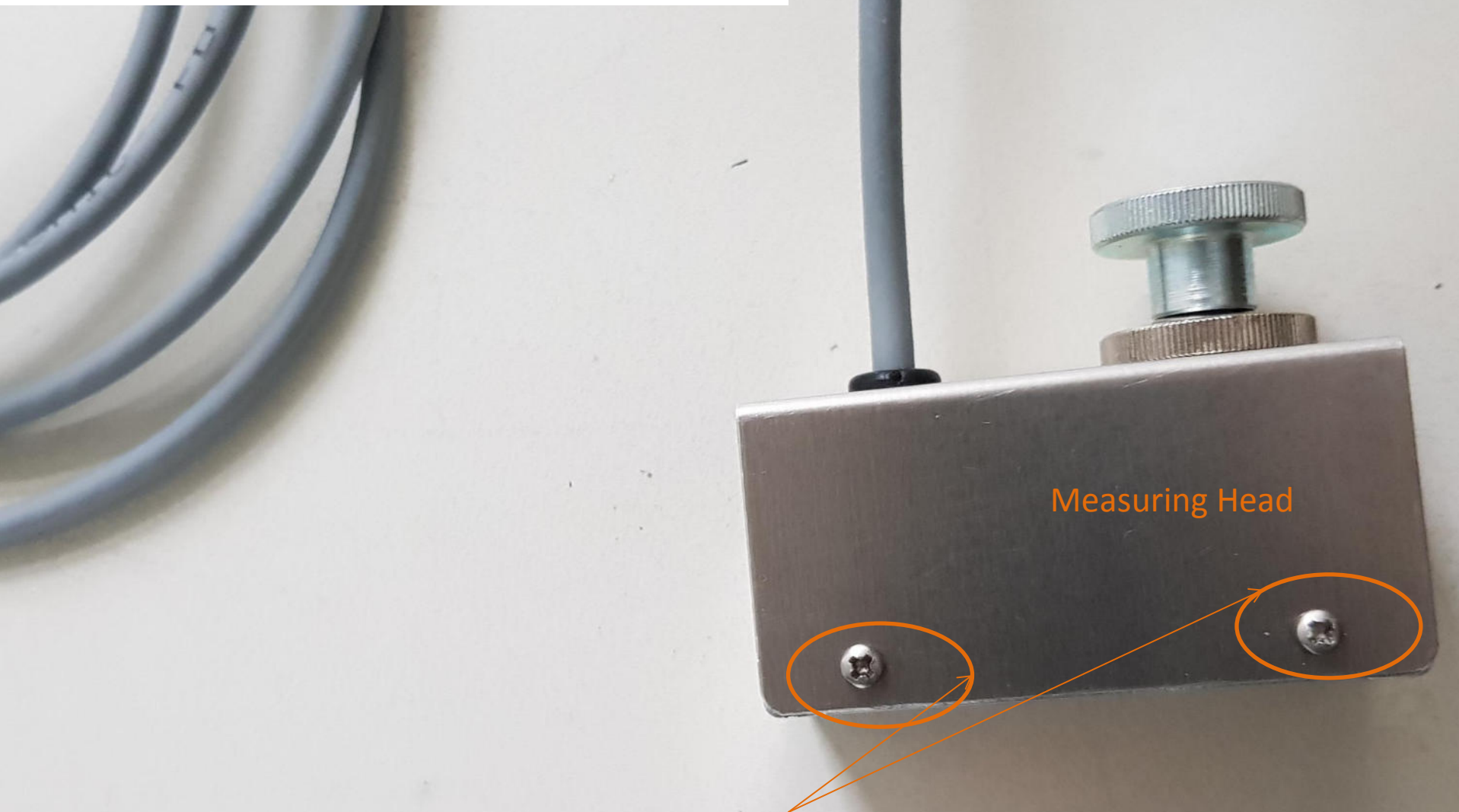


Measuring Head

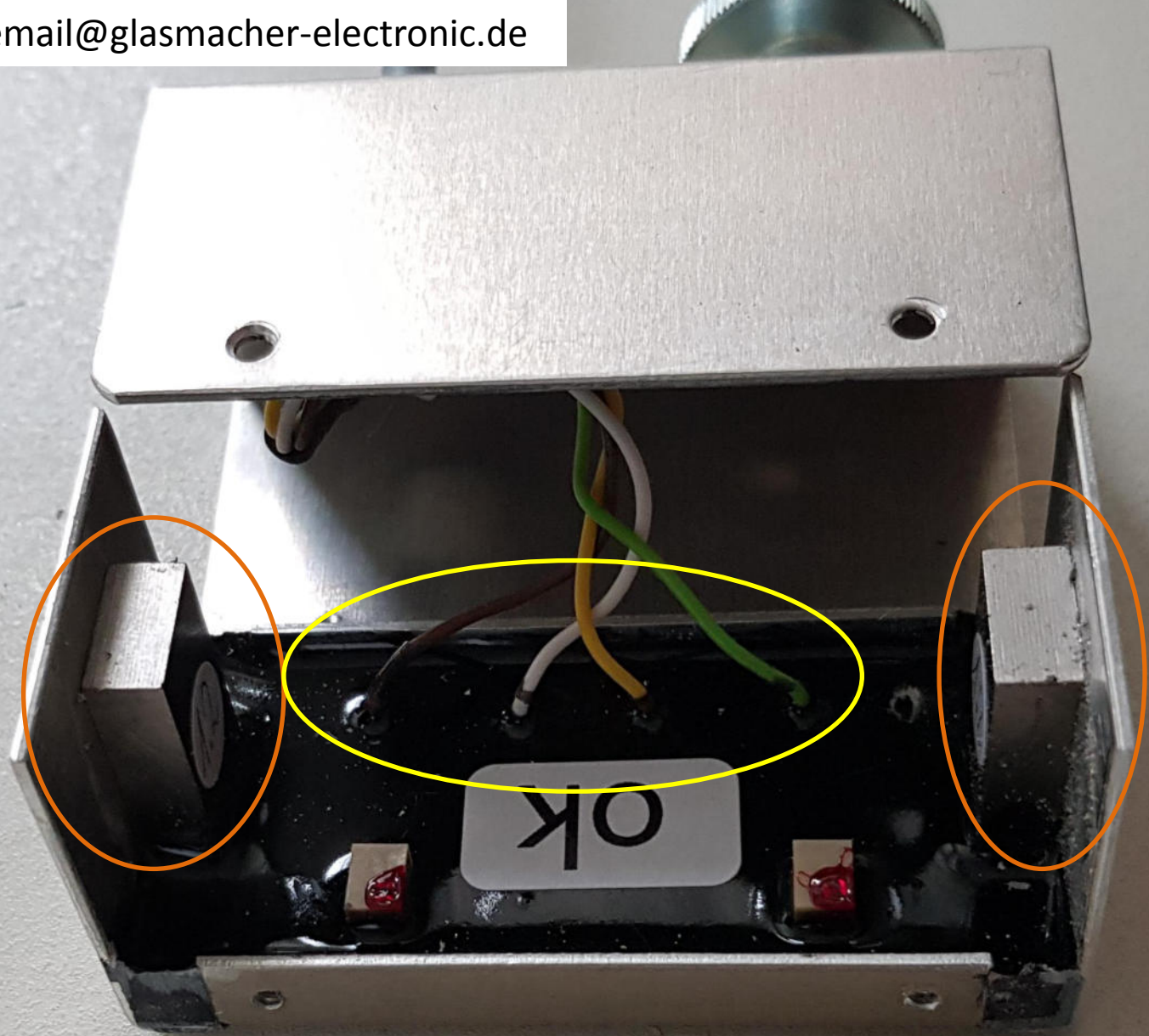
Where is the cable problem? Where is the cable loose?

Measuring device



Measuring Head

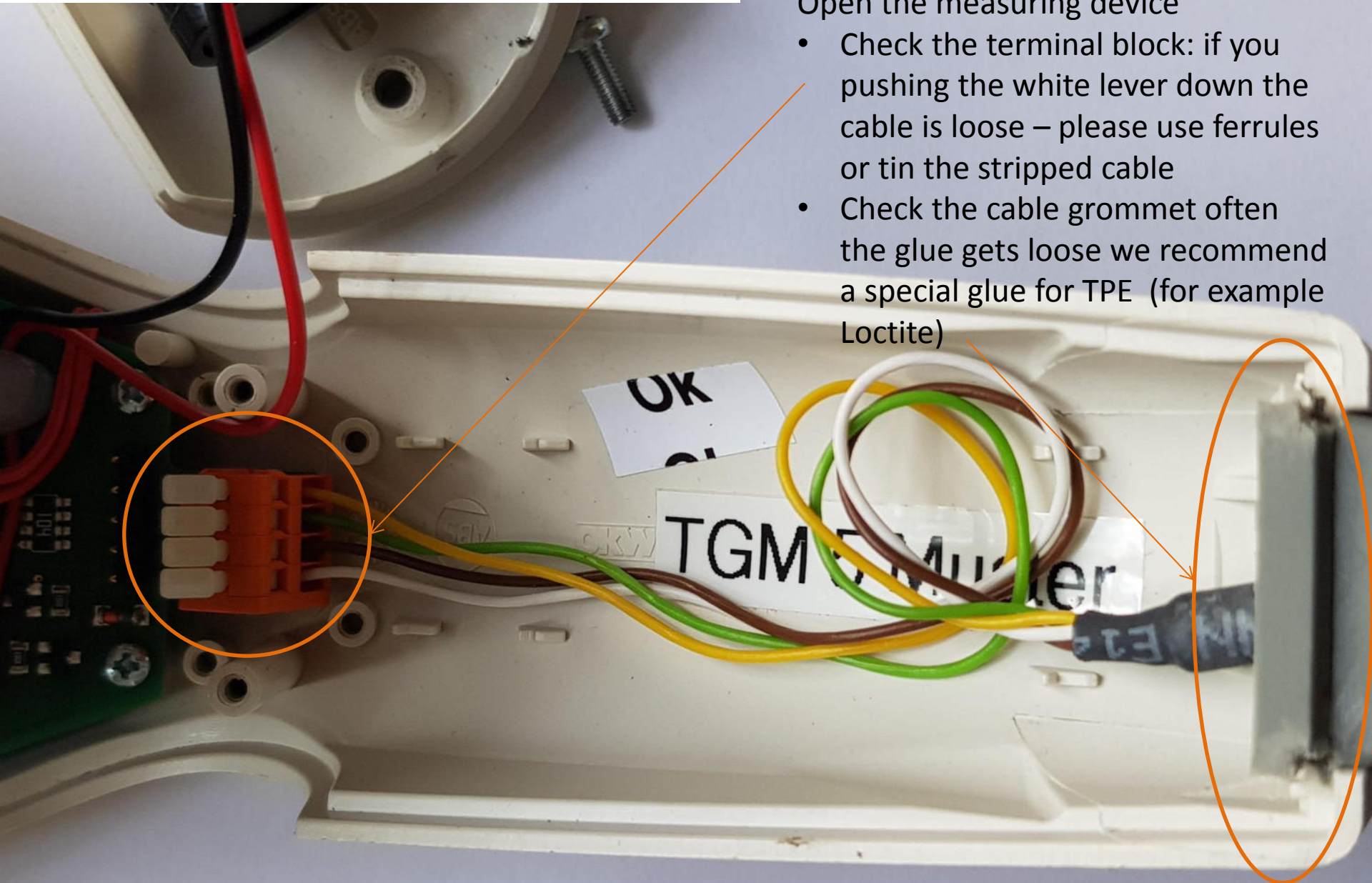
To open the Measuring Head unscrew the 4 screws



Check the **magnets** and the
Cable connections

Open the measuring device

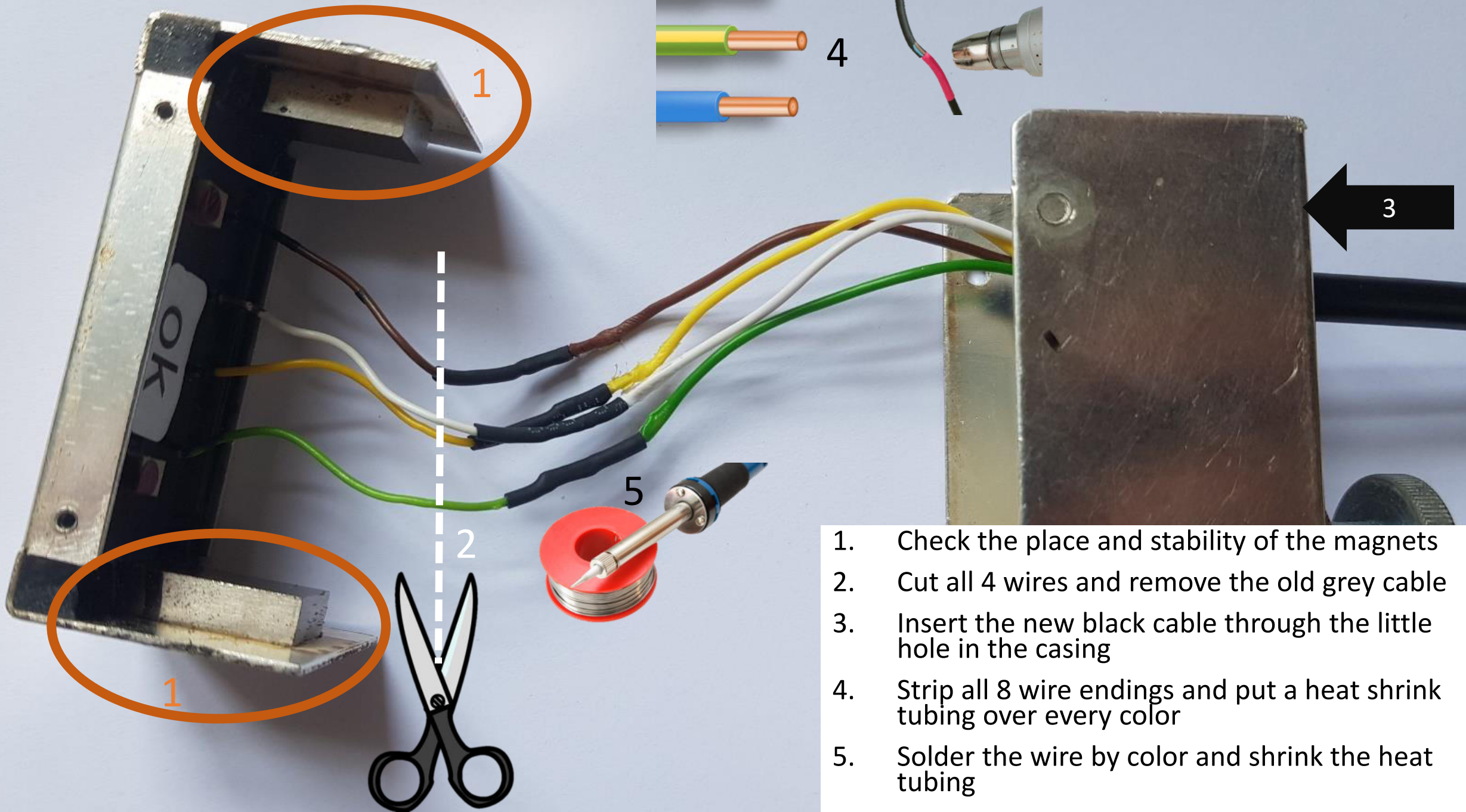
- Check the terminal block: if you pushing the white lever down the cable is loose – please use ferrules or tin the stripped cable
- Check the cable grommet often the glue gets loose we recommend a special glue for TPE (for example Loctite)



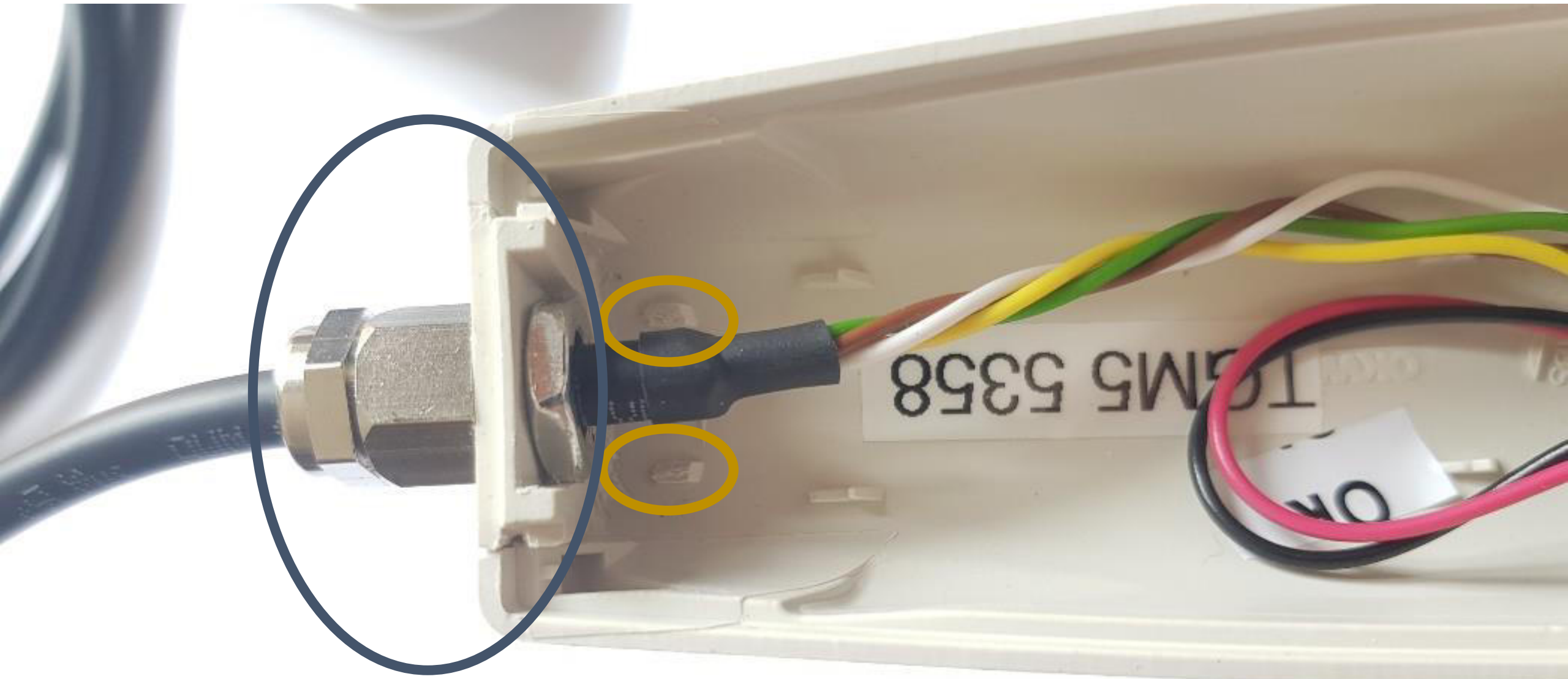
PLEASE DISCONNECT THE BATTERY IMMEDIATLY AFTER OPENING



Because of repeated problems with the cable grommet we changed it in early 2018 from glueing to clamping – please contact email@glasmacher-electronic.de so we can change for you in Germany or send you the metall clamp free of charge so you can change



1. Check the place and stability of the magnets
2. Cut all 4 wires and remove the old grey cable
3. Insert the new black cable through the little hole in the casing
4. Strip all 8 wire endings and put a heat shrink tubing over every color
5. Solder the wire by color and shrink the heat tubing



Replace the cable entry

Remove or sand down the two little plastic noses